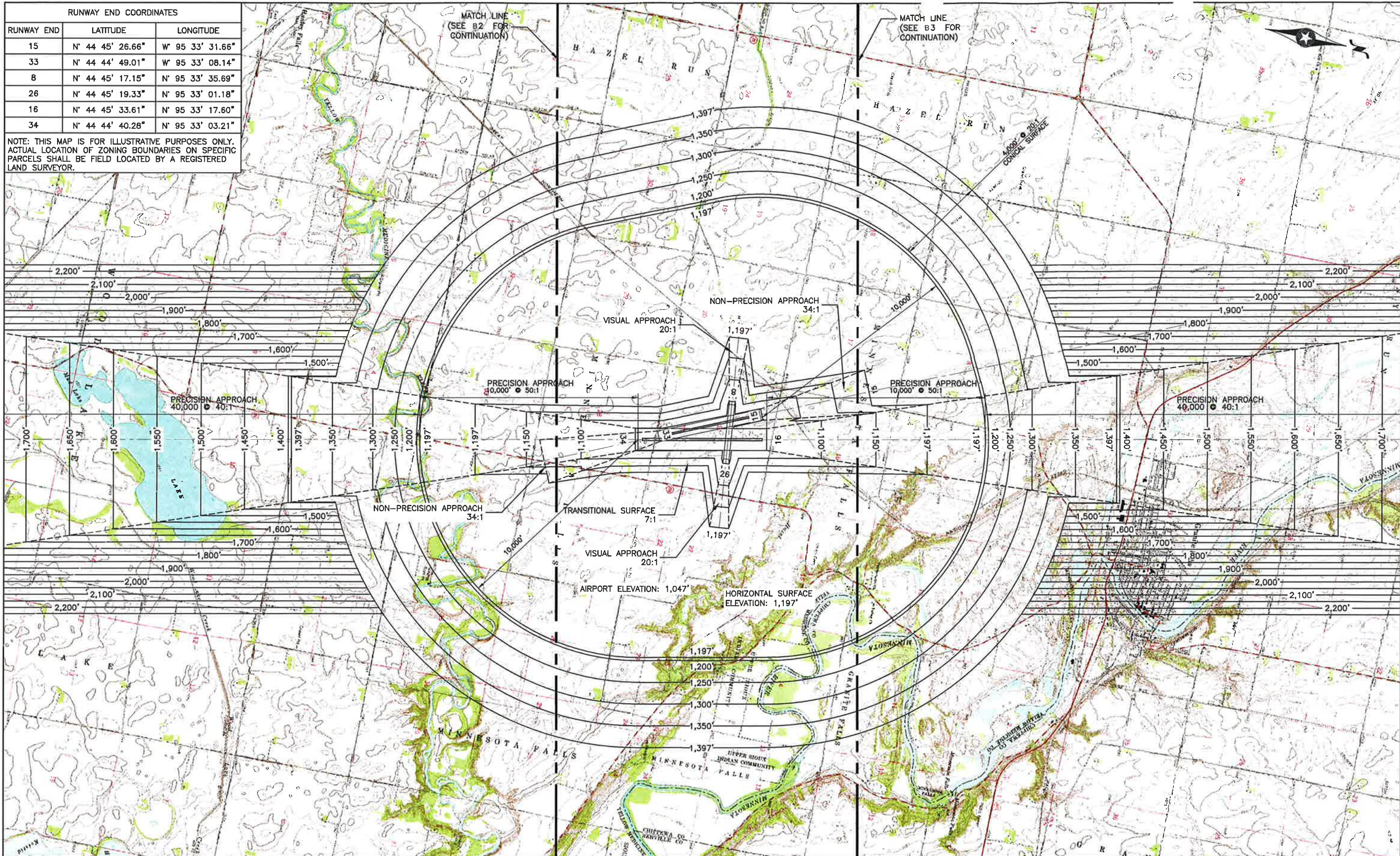


RUNWAY END COORDINATES		
RUNWAY END	LATITUDE	LONGITUDE
15	N° 44 45' 26.66"	W° 95 33' 31.66"
33	N° 44 44' 49.01"	W° 95 33' 08.14"
8	N° 44 45' 17.15"	N° 95 33' 35.69"
26	N° 44 45' 19.33"	N° 95 33' 01.18"
16	N° 44 45' 33.61"	N° 95 33' 17.60"
34	N° 44 44' 40.28"	N° 95 33' 03.21"

NOTE: THIS MAP IS FOR ILLUSTRATIVE PURPOSES ONLY. ACTUAL LOCATION OF ZONING BOUNDARIES ON SPECIFIC PARCELS SHALL BE FIELD LOCATED BY A REGISTERED LAND SURVEYOR.



©Bolton & Menk, Inc. 2010. All Rights Reserved  
 H:\GRAFT41101086\PLANS\101086-1.1A-1.3A.dwg 4/26/11 2:45 pm

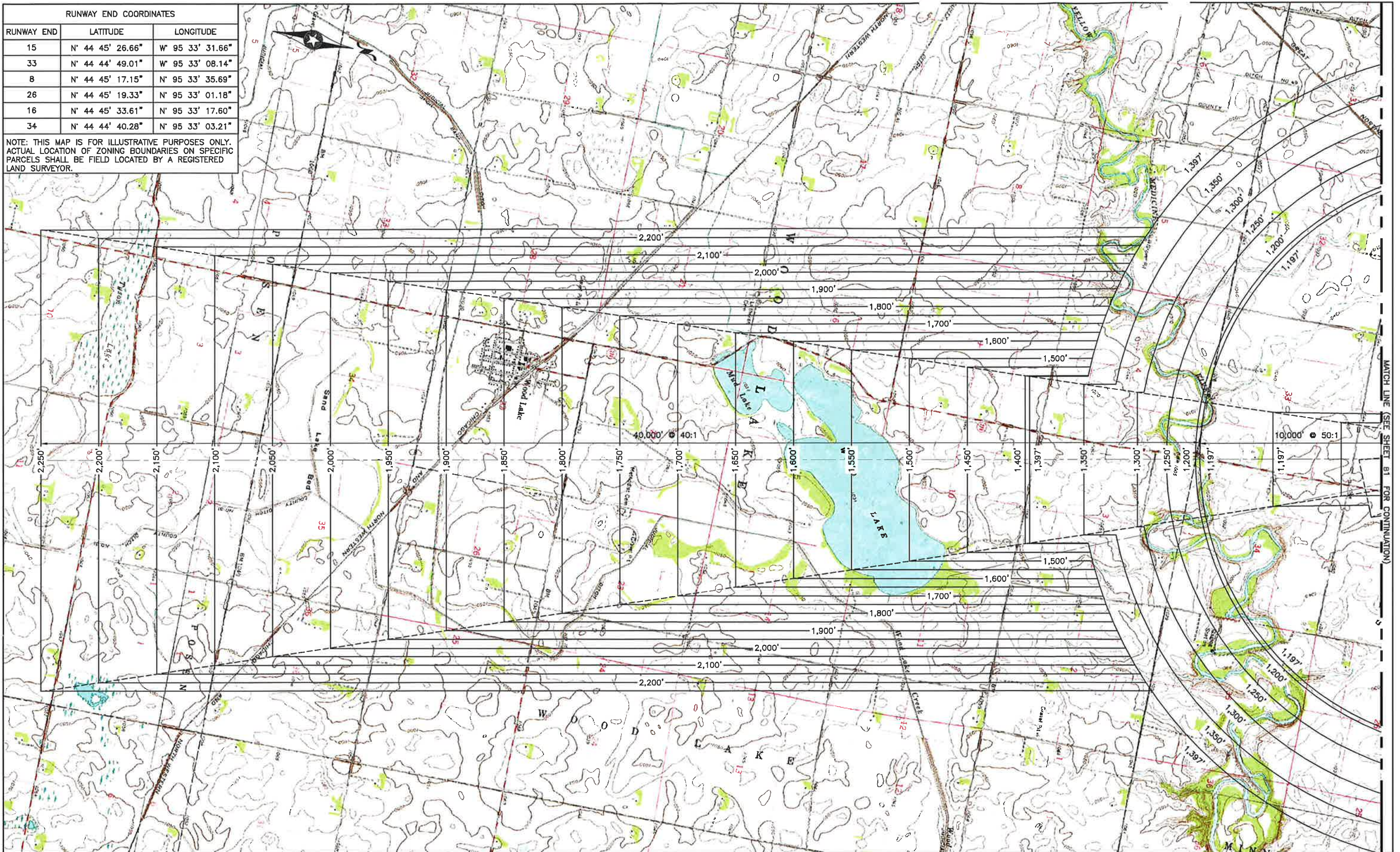
**BOLTON & MENK, INC.**  
 Consulting Engineers & Surveyors  
 MANKATO, MN FAIRMONT, MN SLEEPY EYE, MN  
 BURNSVILLE, MN WILLMAR, MN CHASKA, MN  
 RAMSEY, MN MAPLEWOOD, MN BRAINERD, MN AMES, IA

**GRANITE FALLS MUNICIPAL AIRPORT**  
 AIR SPACE (RUNWAYS 15-33,  
 16-34 & 8-26)

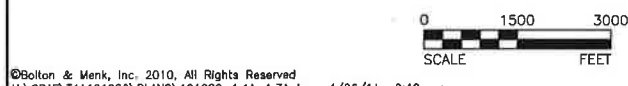
EXHIBIT  
**B1**

RUNWAY END COORDINATES		
RUNWAY END	LATITUDE	LONGITUDE
15	N° 44 45' 26.66"	W° 95 33' 31.66"
33	N° 44 44' 49.01"	W° 95 33' 08.14"
8	N° 44 45' 17.15"	N° 95 33' 35.69"
26	N° 44 45' 19.33"	N° 95 33' 01.18"
16	N° 44 45' 33.61"	N° 95 33' 17.60"
34	N° 44 44' 40.28"	N° 95 33' 03.21"

NOTE: THIS MAP IS FOR ILLUSTRATIVE PURPOSES ONLY. ACTUAL LOCATION OF ZONING BOUNDARIES ON SPECIFIC PARCELS SHALL BE FIELD LOCATED BY A REGISTERED LAND SURVEYOR.



MATCH LINE (SEE SHEET B1 FOR CONTINUATION)

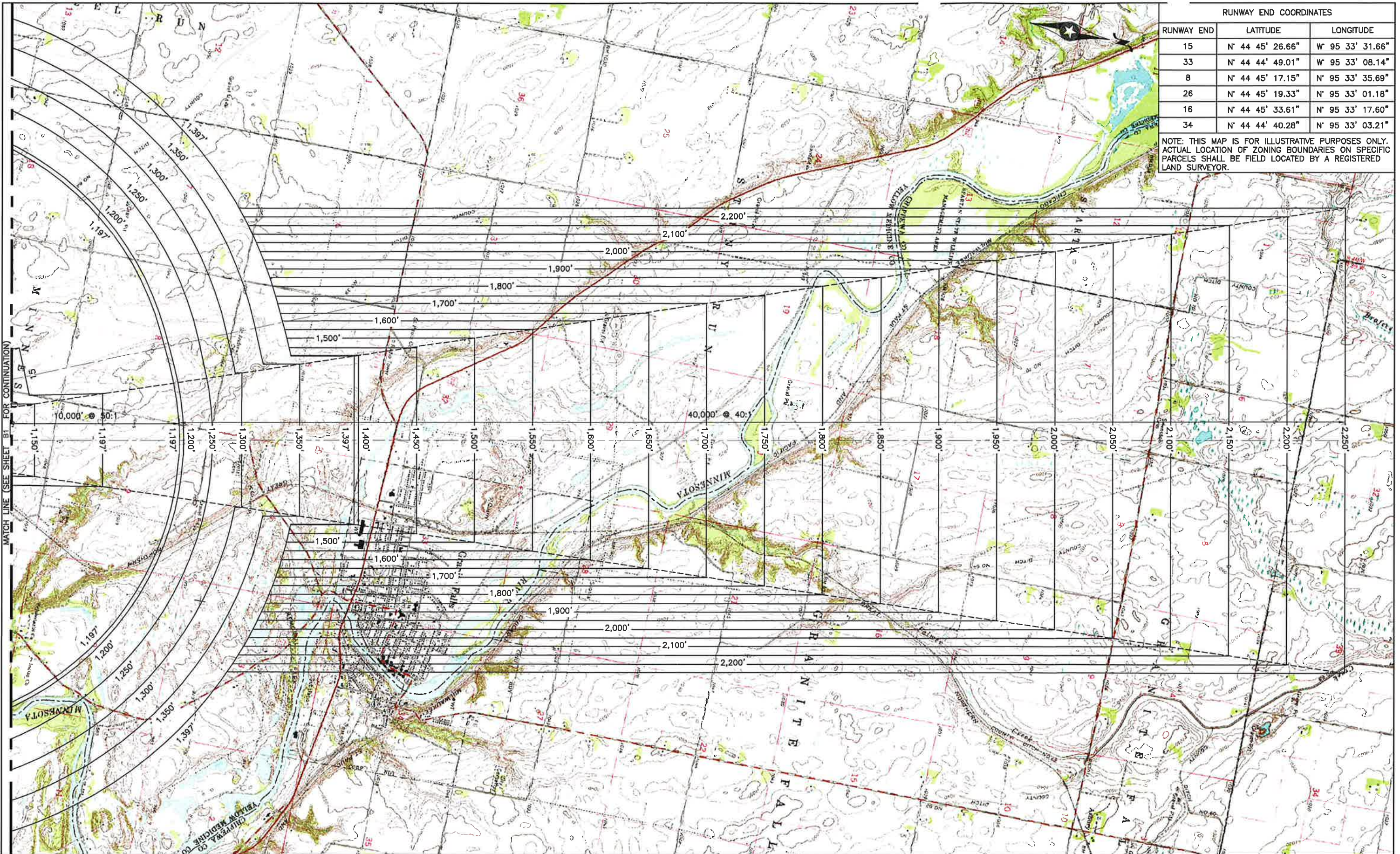


©Bolton & Menk, Inc. 2010. All Rights Reserved  
H:\GRAFT\T41101086\PLANS\101086-1.1A-1.3A.dwg 4/26/11 2:42 pm

**BOLTON & MENK, INC.**  
Consulting Engineers & Surveyors  
MANKATO, MN FAIRMONT, MN SLEEPY EYE, MN  
BURNSVILLE, MN WILLMAR, MN CHASKA, MN  
RAMSEY, MN MAPLEWOOD, MN BRAINERD, MN AMES, IA

**GRANITE FALLS MUNICIPAL AIRPORT**  
AIR SPACE (RUNWAYS 15-33,  
16-34 & 8-26) - SOUTH APPROACH

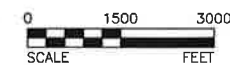
EXHIBIT  
**B2**



RUNWAY END COORDINATES		
RUNWAY END	LATITUDE	LONGITUDE
15	N° 44 45' 26.66"	W° 95 33' 31.66"
33	N° 44 44' 49.01"	W° 95 33' 08.14"
8	N° 44 45' 17.15"	N° 95 33' 35.69"
26	N° 44 45' 19.33"	N° 95 33' 01.18"
16	N° 44 45' 33.61"	N° 95 33' 17.60"
34	N° 44 44' 40.28"	N° 95 33' 03.21"

NOTE: THIS MAP IS FOR ILLUSTRATIVE PURPOSES ONLY. ACTUAL LOCATION OF ZONING BOUNDARIES ON SPECIFIC PARCELS SHALL BE FIELD LOCATED BY A REGISTERED LAND SURVEYOR.

MATCH LINE (SEE SHEET BT FOR CONTINUATION)



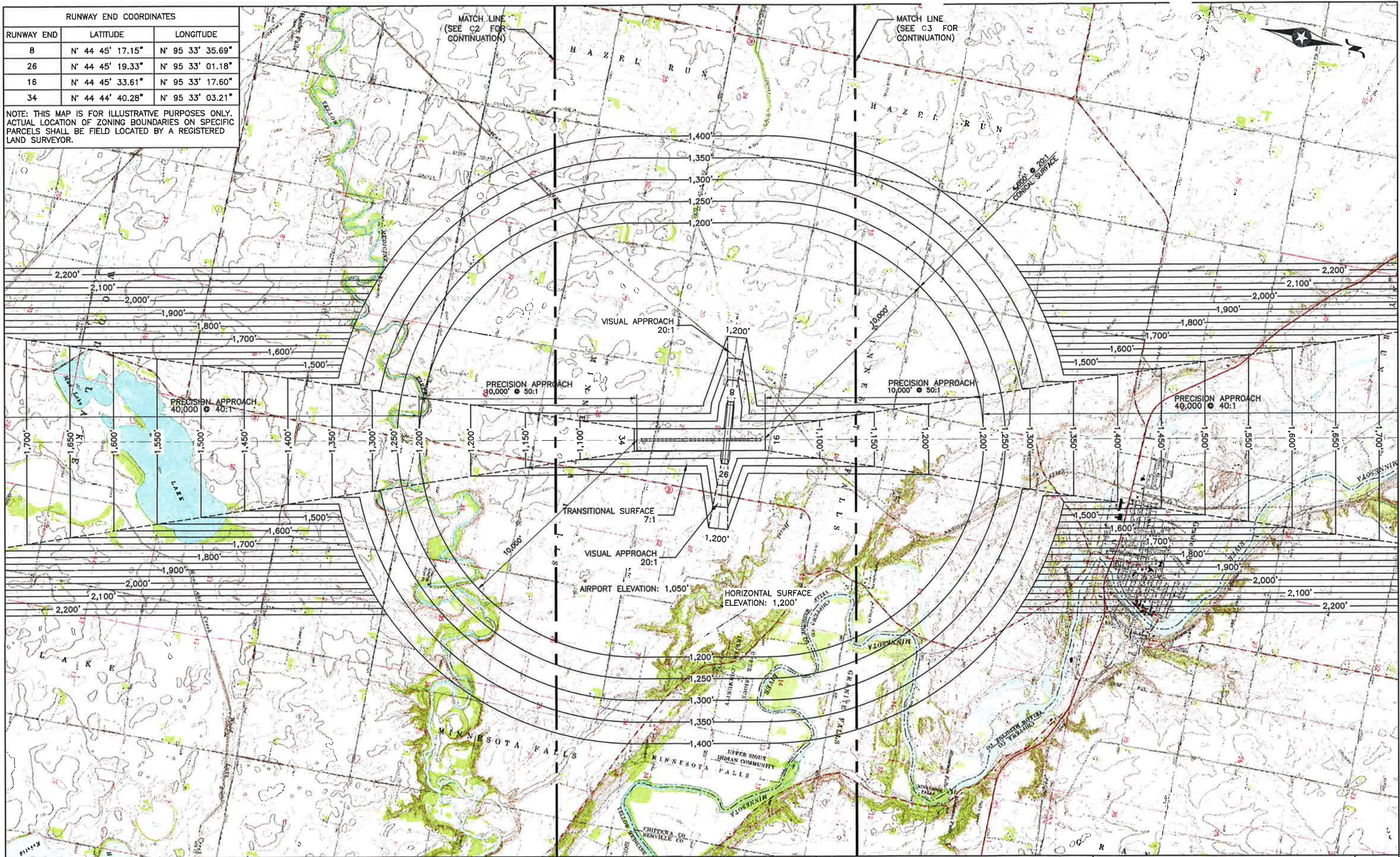
**BOLTON & MENK, INC.**  
 Consulting Engineers & Surveyors  
 MANKATO, MN FAIRMONT, MN SLEEPY EYE, MN  
 BURNSVILLE, MN WILLMAR, MN CHASKA, MN  
 RAMSEY, MN MAPLEWOOD, MN BRAINERD, MN AMES, IA

**GRANITE FALLS MUNICIPAL AIRPORT**  
 AIR SPACE (RUNWAYS 15-33,  
 16-34 & 8-26) - NORTH APPROACH

EXHIBIT  
**B3**

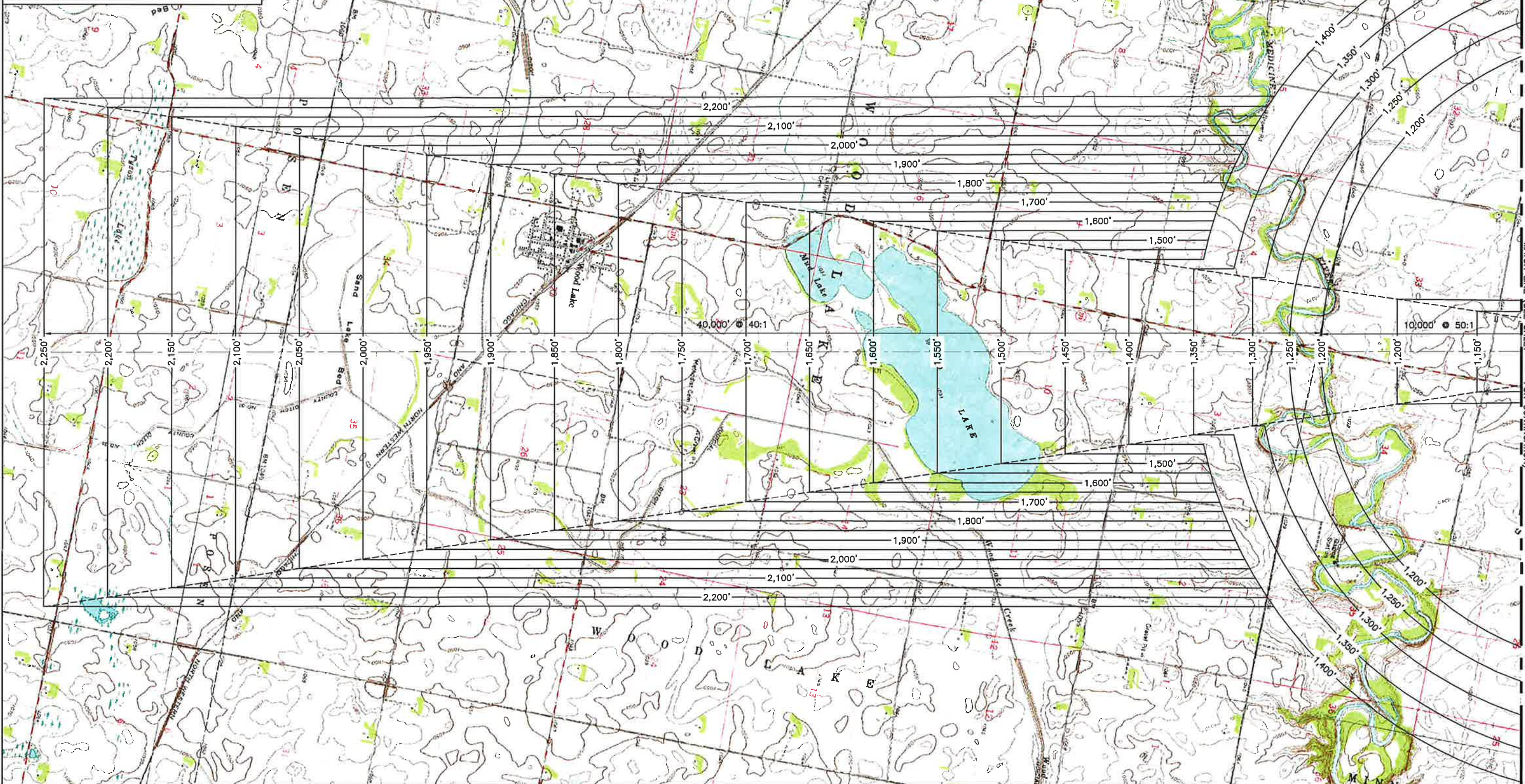
RUNWAY END COORDINATES		
RUNWAY END	LATITUDE	LONGITUDE
8	N° 44 45' 17.15"	N° 95 33' 35.69"
26	N° 44 45' 19.33"	N° 95 33' 01.18"
16	N° 44 45' 33.61"	N° 95 33' 17.60"
34	N° 44 44' 40.28"	N° 95 33' 03.21"

NOTE: THIS MAP IS FOR ILLUSTRATIVE PURPOSES ONLY. ACTUAL LOCATION OF ZONING BOUNDARIES ON SPECIFIC PARCELS SHALL BE FIELD LOCATED BY A REGISTERED LAND SURVEYOR.



RUNWAY END COORDINATES		
RUNWAY END	LATITUDE	LONGITUDE
8	N° 44 45' 17.15"	N° 95 33' 35.69"
26	N° 44 45' 19.33"	N° 95 33' 01.18"
16	N° 44 45' 33.61"	N° 95 33' 17.60"
34	N° 44 44' 40.28"	N° 95 33' 03.21"

NOTE: THIS MAP IS FOR ILLUSTRATIVE PURPOSES ONLY. ACTUAL LOCATION OF ZONING BOUNDARIES ON SPECIFIC PARCELS SHALL BE FIELD LOCATED BY A REGISTERED LAND SURVEYOR.



MATCH LINE (SEE SHEET C1 FOR CONTINUATION)

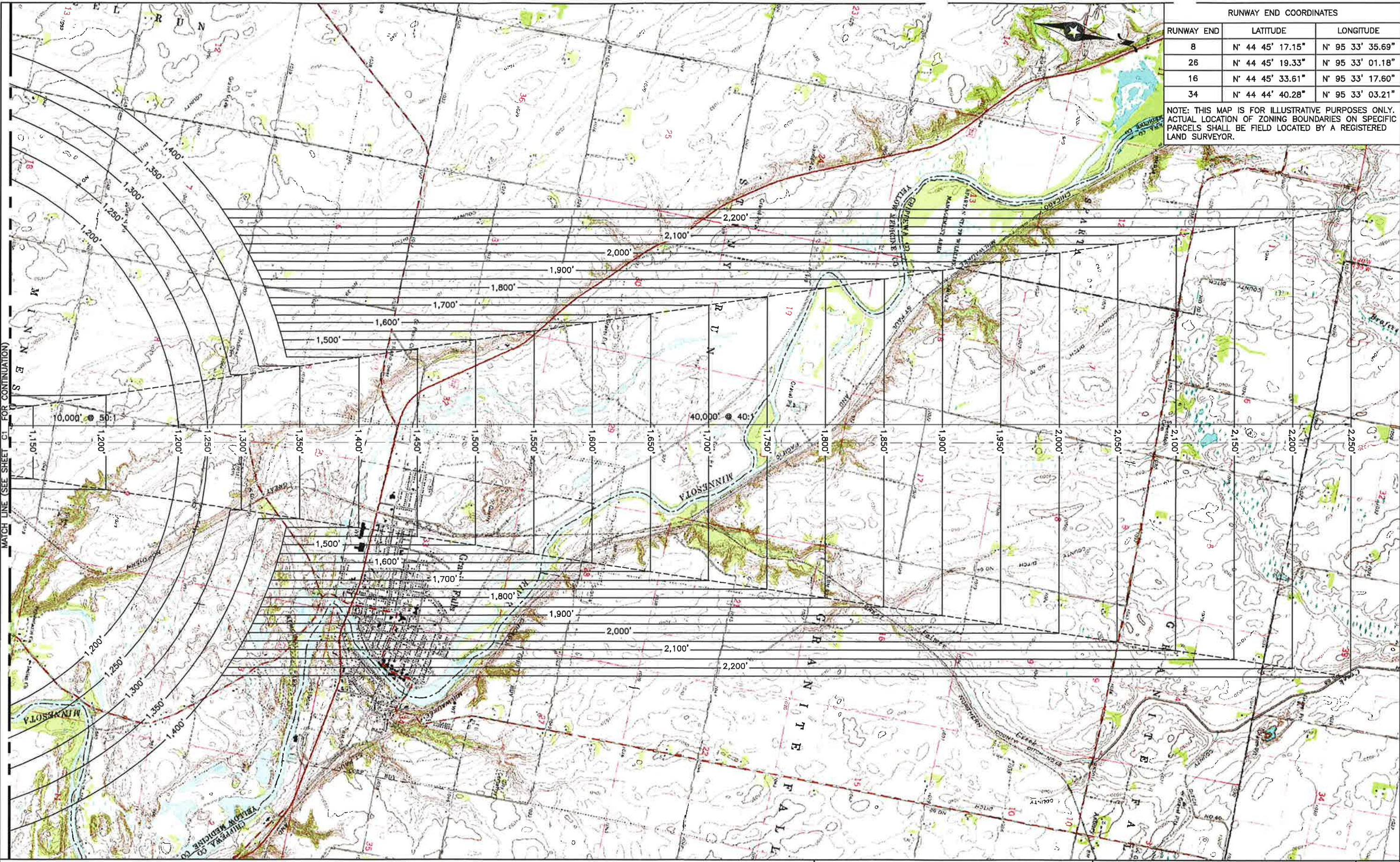


©Bolton & Menk, Inc. 2010. All Rights Reserved  
 H:\GRAF\T41101086\PLANS\101086-ULTIMATE CONTOURS.dwg 4/26/11 2:31 pm

**BOLTON & MENK, INC.**  
 Consulting Engineers & Surveyors  
 MANKATO, MN FAIRMONT, MN SLEEPY EYE, MN  
 BURNSVILLE, MN WILLMAR, MN CHASKA, MN  
 RAMSEY, MN MAPLEWOOD, MN BRAINERD, MN AMES, IA

**GRANITE FALLS MUNICIPAL AIRPORT**  
 AIR SPACE (RUNWAYS 16-34 & 8-26)  
 SOUTH APPROACH

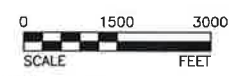
EXHIBIT  
**C2**



RUNWAY END COORDINATES		
RUNWAY END	LATITUDE	LONGITUDE
8	N° 44 45' 17.15"	N° 95 33' 35.69"
26	N° 44 45' 19.33"	N° 95 33' 01.18"
16	N° 44 45' 33.61"	N° 95 33' 17.60"
34	N° 44 44' 40.28"	N° 95 33' 03.21"

NOTE: THIS MAP IS FOR ILLUSTRATIVE PURPOSES ONLY. ACTUAL LOCATION OF ZONING BOUNDARIES ON SPECIFIC PARCELS SHALL BE FIELD LOCATED BY A REGISTERED LAND SURVEYOR.

MATCH LINE (SEE SHEET C1 FOR CONTINUATION)



**BOLTON & MENK, INC.**  
 Consulting Engineers & Surveyors  
 MANKATO, MN FAIRMONT, MN SLEEPY EYE, MN  
 BURNSVILLE, MN WILLMAR, MN CHASKA, MN  
 RAMSEY, MN MAPLEWOOD, MN BRAINERD, MN AMES, IA

**GRANITE FALLS MUNICIPAL AIRPORT**  
 AIR SPACE (RUNWAYS 16-34 & 8-26)  
 NORTH APPROACH

EXHIBIT  
**C3**

NOTE: THIS MAP IS FOR ILLUSTRATIVE PURPOSES ONLY. ACTUAL LOCATION OF ZONING BOUNDARIES ON SPECIFIC PARCELS SHALL BE FIELD LOCATED BY A REGISTERED LAND SURVEYOR

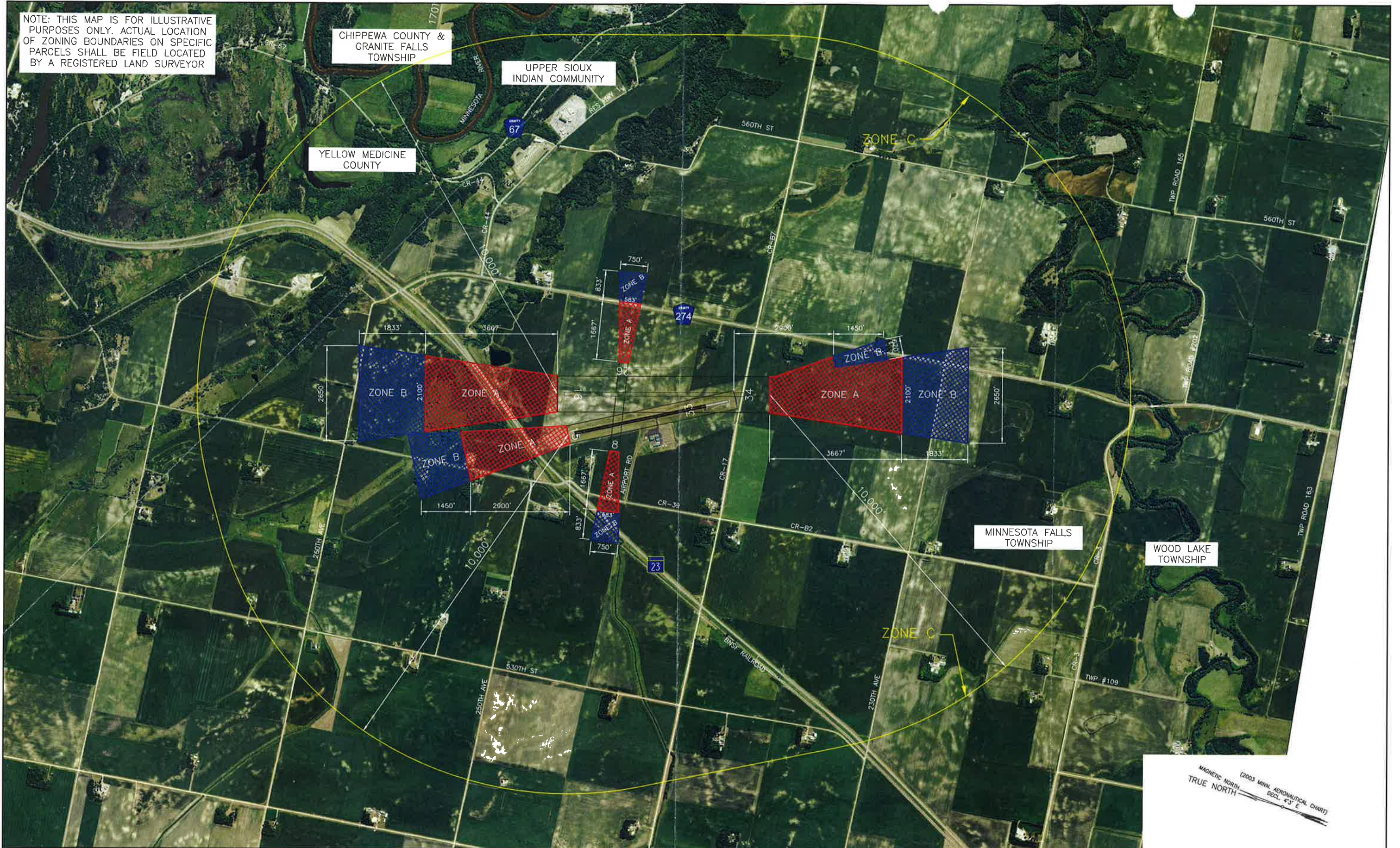
CHIPPEWA COUNTY & GRANITE FALLS TOWNSHIP

UPPER SIOUX INDIAN COMMUNITY

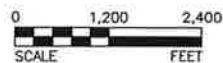
YELLOW MEDICINE COUNTY

MINNESOTA FALLS TOWNSHIP

WOOD LAKE TOWNSHIP



MAGNETIC NORTH (2003 MINN. AERONAUTICAL CHART)  
TRUE NORTH  
DECL. 4°3' E

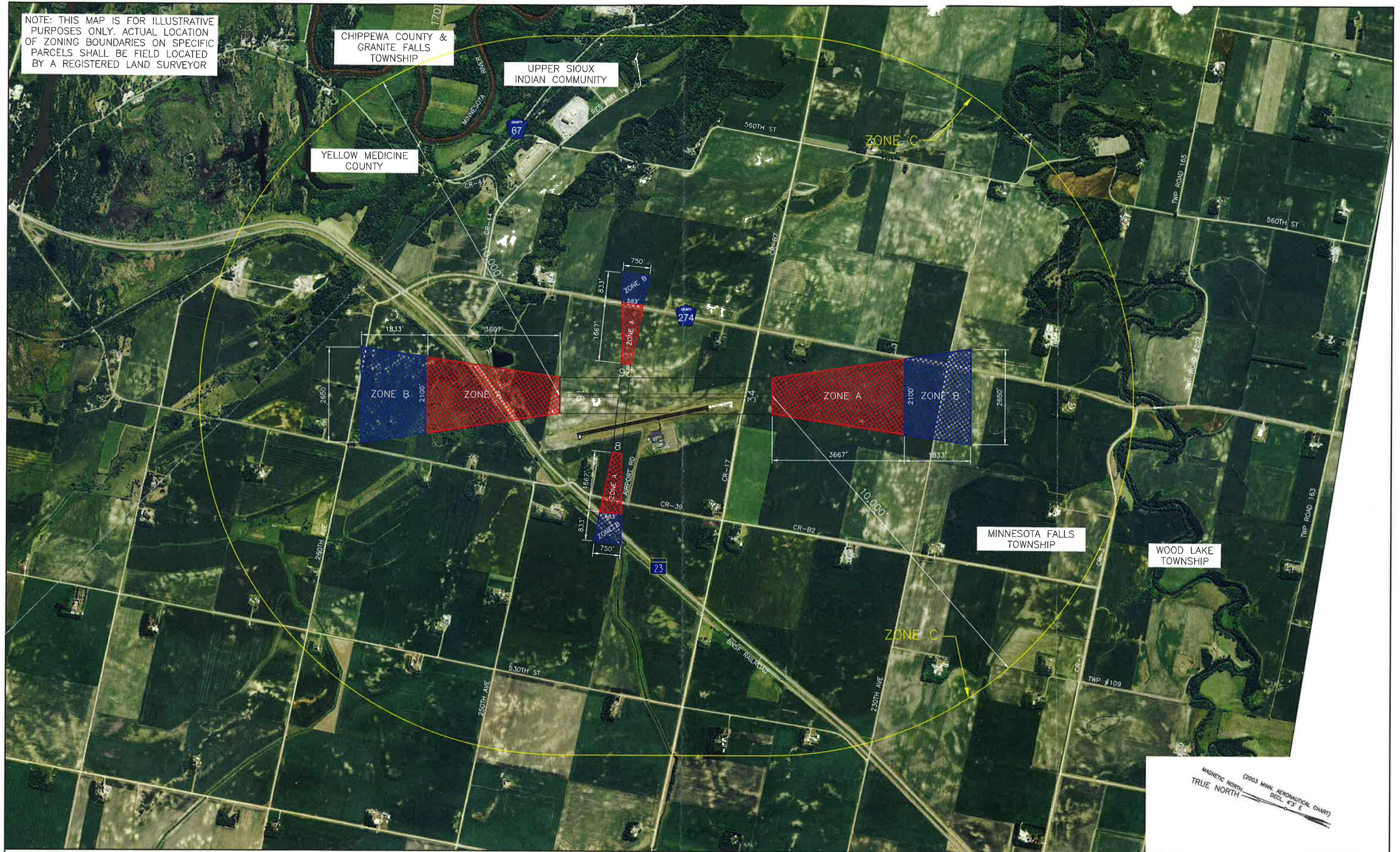


**BOLTON & MENK, INC.**  
Consulting Engineers & Surveyors  
MANKATO, MN FAIRMONT, MN SLEEPY EYE, MN WILLMAR, MN  
BURNSVILLE, MN CHASKA, MN RAMSEY, MN AMES, IA

GRANITE FALLS MUNICIPAL AIRPORT  
LAND USE SAFETY ZONES (RUNWAYS 15-33  
16-34 & 8-26)

EXHIBIT  
D1

NOTE: THIS MAP IS FOR ILLUSTRATIVE PURPOSES ONLY. ACTUAL LOCATION OF ZONING BOUNDARIES ON SPECIFIC PARCELS SHALL BE FIELD LOCATED BY A REGISTERED LAND SURVEYOR



CHIPPEWA COUNTY & GRANITE FALLS TOWNSHIP

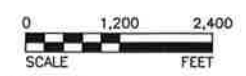
UPPER SIOUX INDIAN COMMUNITY

YELLOW MEDICINE COUNTY

MINNESOTA FALLS TOWNSHIP

WOOD LAKE TOWNSHIP

MAGNETIC NORTH (2003 MNN. AERONAUTICAL CHART)  
TRUE NORTH DECL. 4°3' E



**BOLTON & MENK, INC.**  
Consulting Engineers & Surveyors  
MANKATO, MN FAIRMONT, MN SLEEPY EYE, MN WILLMAR, MN  
BURNSVILLE, MN CHASKA, MN RAMSEY, MN AMES, IA

GRANITE FALLS MUNICIPAL AIRPORT  
LAND USE SAFETY ZONES (RUNWAYS 16-34 & 8-26)

EXHIBIT  
D2